

Riverbend Towns

Buyer's Package



PLEASE ENQUIRE FOR PRICING

EXISTING RESIDENTS

RIVERBEND ROAD



OPTIONAL UPGRADES

- KitchenAid 3-PC Kitchen Appliance Package.....**\$6500**
(Electric Stove, Standard Refrigerator & Dishwasher)
- Whirlpool Washer & Electric Dryer (White).....**\$2100**
- Upgrade to hardwood in upper bedroom level hallway.....**\$3000**
- White roller shades (room darkening in bedrooms, 1% in all other areas).....**\$3500**
- Upgrade to finished basement, includes 3 pc bath.....**\$40,000**

EXTERIOR FEATURES

- LIFETIME WARRANTY ARCHITECTURAL SHINGLES
- MIX OF JAMES HARDIE, BRICK AND STONE EXTERIOR
- SINGLE CAR GARAGE WITH 8'X8' INSULATED GARAGE DOOR
- GARAGE DOOR OPENER
- BLACK EXTERIOR WINDOWS
- BLACK SOFFIT, FASCIA & EAVES TROUGHS
- PAVING STONE DRIVEWAY AND WALKWAY TO FRONT DOOR
- REAR WOOD DECK INCLUDED
- FULLY SODDED

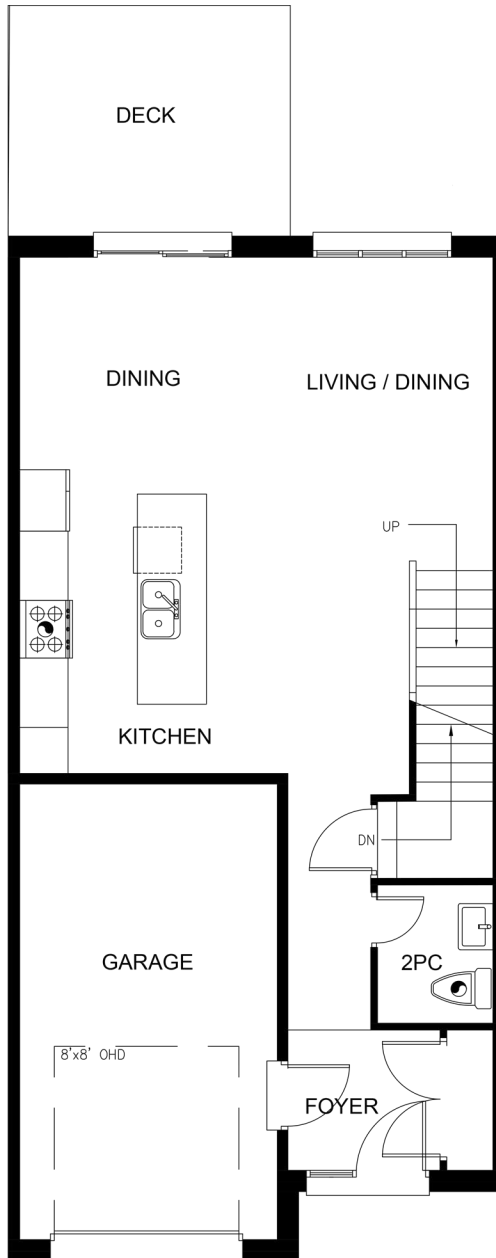
INTERIOR FEATURES

- INCLUDES 8' INTERIOR MAIN AND 8' EXTERIOR DOORS
- 3 1/2 " CASING AND MATCHING 5 1/2 " BASEBOARD
- PRE-SELECTED POT LIGHTS AND DESIGNER SELECTED LIGHT FIXTURES
- 100 AMP SERVICE
- RANGE HOOD SUPPLIED AND INSTALLED
- ENGINEERED HARDWOOD ON MAIN FLOOR
- CUSTOM CABINETS AND QUARTZ COUNTERTOPS THROUGHOUT
- ENSUITE INCLUDES WALK-IN SHOWER WITH CUSTOM GLASS ENCLOSURE
- LARGE WALK-IN CLOSET IN PRIMARY BEDROOM
- SINGLE SINK IN MAIN BATH / DUAL SINKS IN ENSUITE
- CARPET THROUGHOUT ALL BEDROOMS AND SECOND FLOOR HALLWAY
- STAINED STAIRS AND RAILING TO MATCH ENGINEERED HARDWOOD ON MAIN FLOOR WITH BLACK ALUMINUM SPINDLES
- ALL BLACK HARDWARE
- TILE FLOORS IN MUDROOM, LAUNDRY AND ALL BATHROOMS
- INTERIOR PAINTED WITH PREMIUM BENJAMIN MOORE REGAL ULTI-MATTE
- 9' CEILINGS ON MAIN FLOOR / 8' CEILINGS ON SECOND FLOOR
- CENTRAL VACUUM INCLUDED
- ALARM SYSTEM INCLUDED
- TANKLESS HOT WATER RENTAL THROUGH RELIANCE

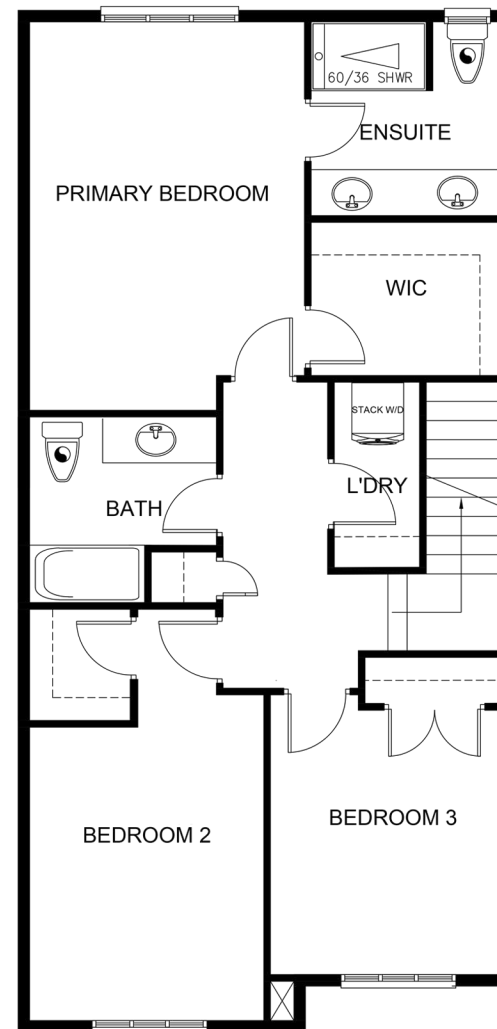
STANDARD INTERIOR UNITS

STARTING AT 1538 SQ FT - 1693 SQ FT

* SQUARE FOOTAGE VARIES BASED ON UNIT DESIGN



MAIN FLOOR

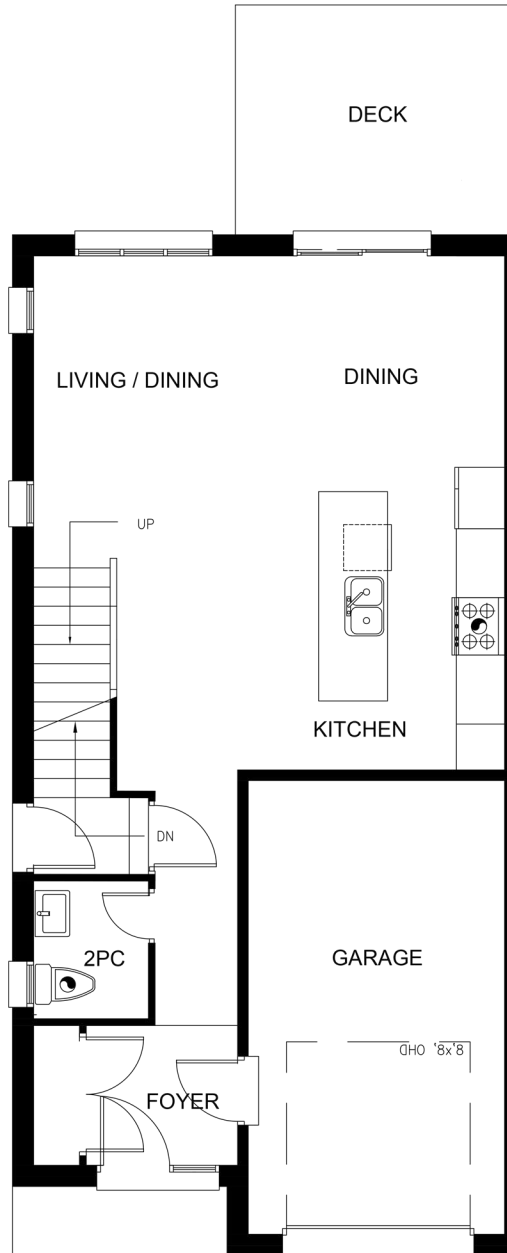


SECOND FLOOR

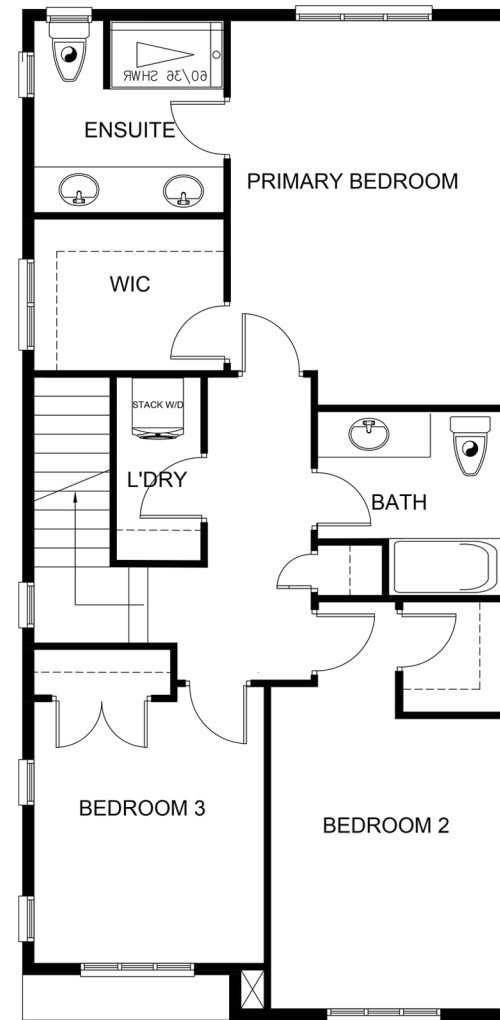
STANDARD CORNER UNITS

STARTING AT 1612 SQ FT - 1727 SQ FT

* SQUARE FOOTAGE VARIES BASED ON UNIT DESIGN



MAIN FLOOR

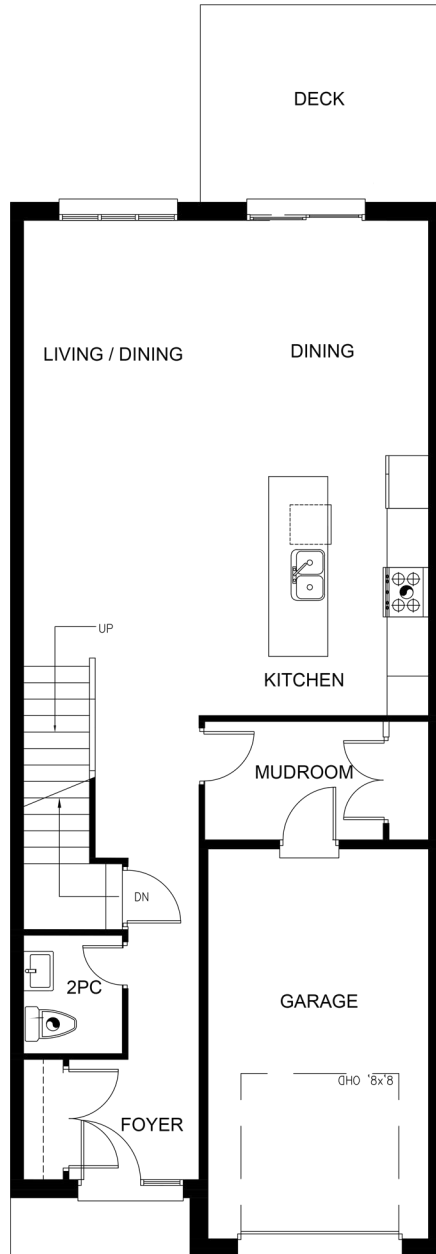


SECOND FLOOR

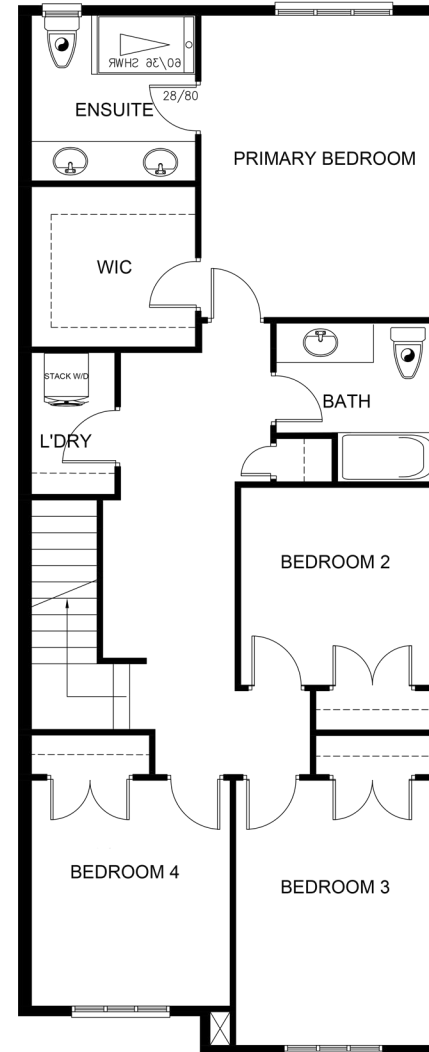
PREMIUM INTERIOR UNITS

1986 SQ FT

* SQUARE FOOTAGE VARIES BASED ON UNIT DESIGN



MAIN FLOOR

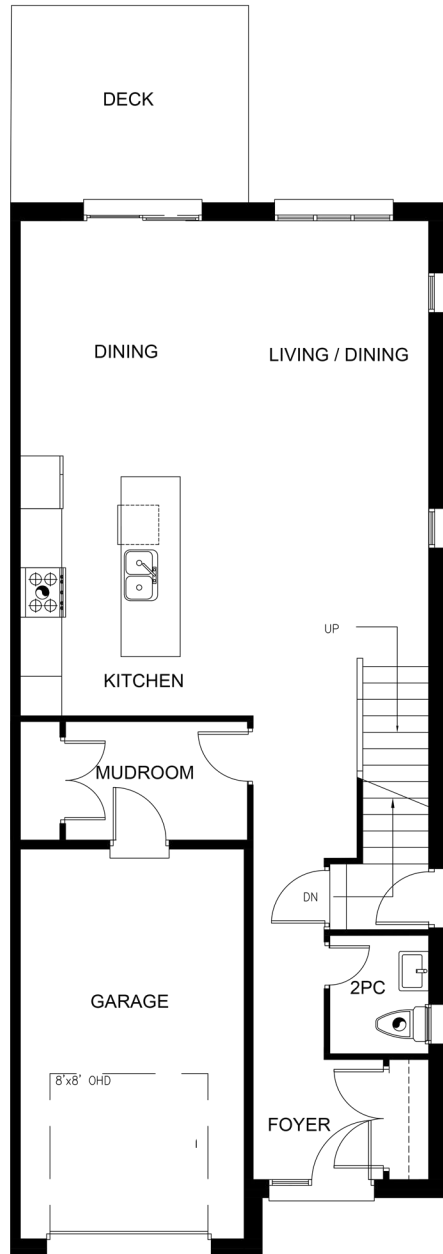


SECOND FLOOR

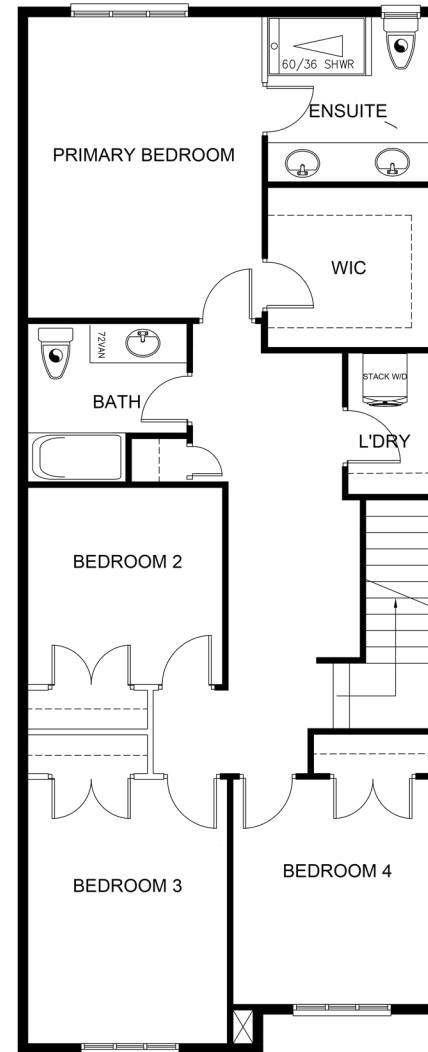
PREMIUM CORNER UNITS

2026 SQ FT

* SQUARE FOOTAGE VARIES BASED ON UNIT DESIGN



MAIN FLOOR



SECOND FLOOR



RIVERBEND TOWNS

www.luxhomesdesignbuild.ca

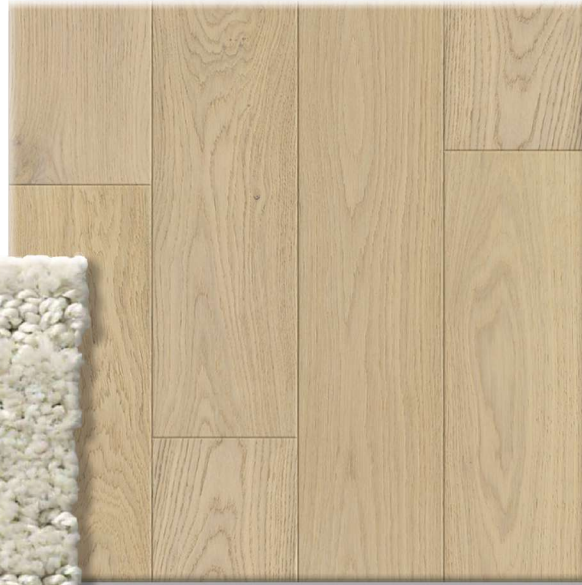


*RENDERING IS ARTIST'S CONCEPT OF COMPLETED BUILDING AND IS SUBJECT TO CHANGE. ILLUSTRATION MAY SHOW OPTIONAL FEATURES THAT ARE NOT INCLUDED IN BASE PRICE. SEE SALES REPRESENTATIVE FOR MORE INFORMATION.

FLOORING SELECTIONS



STANDARD CARPET



STANDARD HARDWOOD



STANDARD FLOOR TILE

STANDARD HARDWOOD

TWELVE OAKS WHITE OAK
COLOUR: SUMMERWOOD
6 1/2" X 3/4" X RANDOM LENGTHS

STANDARD FLOOR TILE

J+L TILE LUXOR SERIES
COLOUE: SILVER

AREAS USED:

MUDROOM, LAUNDRY ROOM,
MAIN BATH FLOOR, ENSUITE FLOOR

STANDARD CARPET

SHAW FLOORS ALL IN ONE
COLOUR: SOHO

CABINETY SELECTIONS



STANDARD CABINETY

FLUSH SLAB DOOR IN MATTE FINISH WITH
SLEEK MATTE BLACK FINGER PULL
HARDWARE

COUNTER SELECTION



STANDARD QUARTZ

A neutral variety of quartz boasting a purist white foundation speckled with wispy grey veining.

PATTERN: VEINED
FINISH: POLISHED

PLUMBING SELECTIONS



STANDARD KITCHEN FAUCET



STANDARD LAVATORY FAUCET



STANDARD SHOWER HEAD TUB TRIM KIT



STANDARD DROP-IN TUB - MAIN BATH

LIGHT FIXTURE SELECTIONS



POWDER ROOM, MAIN BATH, ENSUITE



FLUSH -MOUNT
AREAS: BEDROOMS,
MUDROOM, LAUNDRY ROOM, WIC,
DINETTE & UPPER HALLWAY



EXTERIOR WALL LIGHT

PAINT SELECTIONS



STANDARD - TRIM COLOUR
BENJAMIN MOORE - CHANTILLY LAVE OC-65



STANDARD - WALL COLOUR
BENJAMIN MOORE - DECORATORS WHITE

APPLIANCES

Lux Homes would like to offer you this suite of appliances for your new home:

- 3 PC KitchenAid (Refrigerator, Electric Stove, Dishwasher \$6500 + HST Installed)
- Whirlpool Washer + Electric Dryer (White) \$2100 + HST Installed



WHIRLPOOL - WASHER & DRYER OPTION IN WHITE
5.2 CUF WASHER & 7.4 CUF DRYER



36" FRENCH DOOR FRIDGE WITH INTERNAL ICE AND WATER
30" FRONT CONTROL ELECTRIC RANGE
24" DISHWASHER WITH STAINLESS INTERIOR